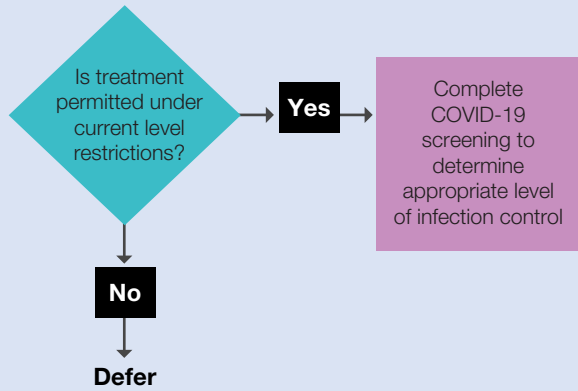


COVID-19 Quick Reference Poster for Infection Control

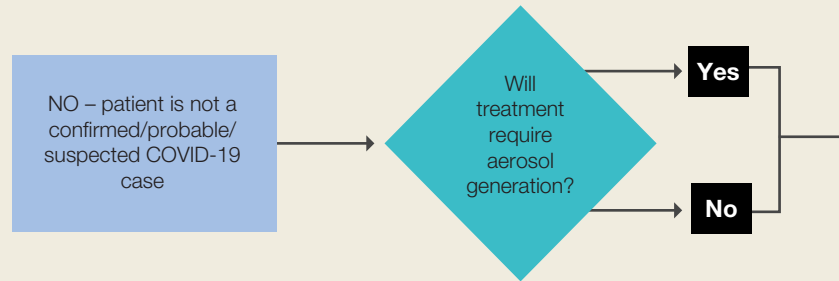
OVER THE PHONE SCREENING PROCESS



If you have a suspected/confirmed or probable COVID-19 case who requires emergency dental treatment that cannot wait, please call the National Coronavirus Helpline on 1800 020 080 for advice.

IN THE DENTAL PRACTICE

Always complete COVID-19 screening again to confirm status before commencing treatment



Standard Precautions

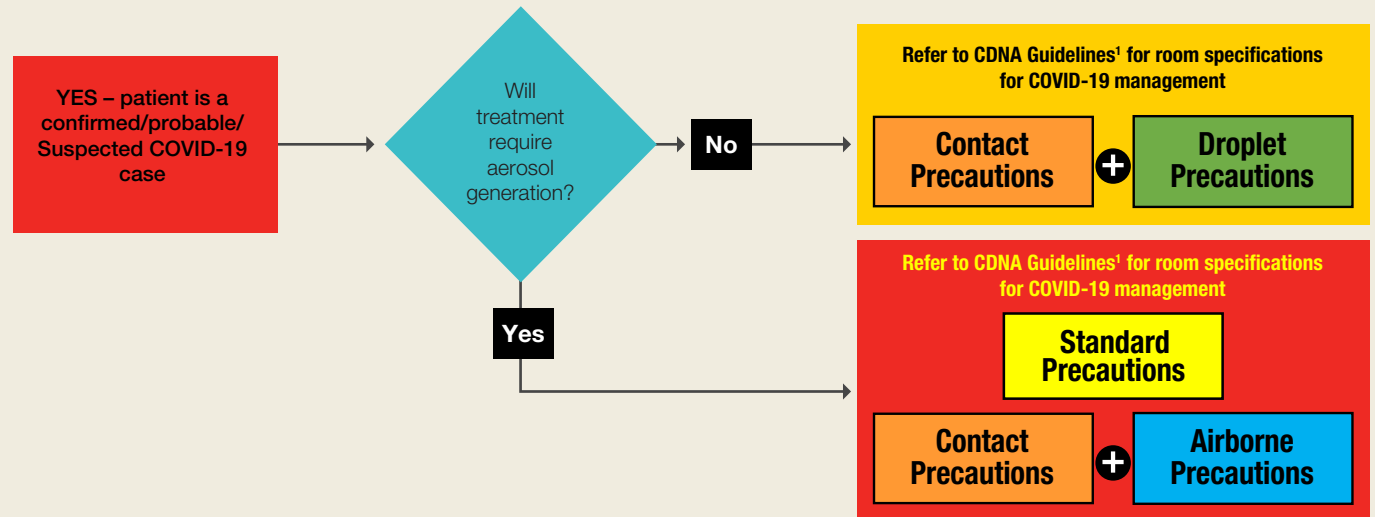
Standard Precautions represent the minimum infection prevention measures that apply to all patient care, regardless of suspected or confirmed infectious status of the patient.

This includes hand hygiene, how you reprocess or manage your instruments and management of sharps.

See reverse chart for PPE and Environmental Management guidance when treating patients under Standard Precautions.

References and supplementary information

1. CDNA National guidelines for public health units - Coronavirus Disease 2019 (COVID-19) Version 3.8 (24/08/2020)
2. Australian Guidelines for the Prevention and Control of Infection in Healthcare, Canberra: National Health and Medical Research Council 2019
3. Dental Board of Australia - COVID-19 means dental practitioners must be vigilant (09/07/2020)



Refer to CDNA Guidelines¹ for room specifications for COVID-19 management

Contact Precautions

+

Droplet Precautions

Refer to CDNA Guidelines¹ for room specifications for COVID-19 management

Standard Precautions

Contact Precautions

+

Airborne Precautions



Australian Dental Association
NSW Branch

COVID-19 Quick Reference Poster for Personal Protective Equipment and Environmental Management

	NO - Patient is not a COVID-19 suspected/confirmed/probable case	YES - Patient is a COVID-19 suspected/confirmed/probable case	YES - Patient is a COVID-19 suspected/confirmed/probable case
		No, patient does not need an Aerosol Generating Procedure (AGP)	Yes, patient does need an Aerosol Generating Procedure (AGP)
	STANDARD PRECAUTIONS	STANDARD PRECAUTIONS CONTACT PRECAUTIONS + DROPLET PRECAUTIONS	STANDARD PRECAUTIONS CONTACT PRECAUTIONS + AIRBORNE PRECAUTIONS
Hand Hygiene	✓	✓	✓
Surgical mask	✓	✓	✗
P2/N95 Respirator	✗	✗	✓
Protective eyewear ¹	✓	✓	✓
Fluid impervious gown	Risk Assess ²	✓	✓
Fluid impervious apron	Risk Assess ²	✗	✗
Non-sterile gloves	✓	✓	✓
Neutral detergent	✓	✓	✓
Disinfectant ³	✗	✓	✓
Negative pressure room	✗	✗	Risk Assess ⁴
Room with a door shut	✗	Risk Assess ⁴	Risk Assess ⁴
Resting the room for 30mins ⁵	✗	✗	✓

1 Protective eyewear may be a single or re-useable face/eye protection/face-shield, mask visor, safety glasses or goggles. What eyewear you select would be related to the potential risk of exposure.

2 Aprons and gowns are designed to protect the wearer from exposure. Which one you wear depends on how much blood or body substance spray/splash you are anticipating.

3 The use of disinfectant should be reserved for cleaning the environment again after an initial clean with a neutral detergent. Disinfectant should be TGA listed for the specific pathogen you are trying to manage as part of transmission based precautions. Check the manufacturer instructions for how to use these products. There are two-in-one products (neutral detergent + disinfectant). It is not recommended to use disinfectants on a routine basis – they're likely to increase the risk of damaging your dental chair and other clinical surfaces and is not required under Standard Precautions.

4 There are a range of treatment room options (negative pressure, 3m spacing, door closed, operating theatre, window open etc.) for managing a potential or confirmed COVID-19 case. Please phone the National Coronavirus Helpline on 1800 020 080 for support.

5 Resting the room for 30mins is a minimum guide and does depend on ventilation and air changes.